

Function Introduction

Spray Nozzle

Potting Box

You can plant your favorite plants as you like.

Function Buttons

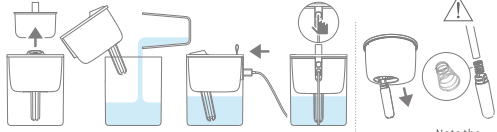
Mist: Click on button to open continuous mist mode when power on. Click on button again to open intermittent mist mode(4 seconds on and 2 seconds off), the third time click on button to close off. (Circulate in order)

Night light: Press the button for 3 seconds to open night light, then press 3 seconds again to close night light. (Circulate in order)

Anti-dry burning: Spraying mode set with 4 hours automatic shut off, and you can continue use by restart it.

USB power port

Operation Instructions and Replacement of cotton sticks



Take out pot plants

Lift up the top cover and fill water into water tank

Plug in power

Press the button "ON/OFF" to start

Rotate to the left and then take out cotton stick

Note the bottom spring when changing

Product Maintenance

- Please check the compatibility of the power adapter voltage and humidifier before use, please use the power adapter voltage with output voltage 5v, and try to use standard USB cord as possible as you can.
- When first use or use it after a long-time idle, Please take out the cotton stick first, and soak it in water, then put it back to catheter to use. Humidifier needs change cotton stick and clean atomizing piece regularly which is benefit to extend its service life.
- Warnings: Do not fill water tank with warm or hot water. Please do not add any perfume or essential oils into the tank. Essential oils can lead to erosion of the humidifier. Do not soak the unit in water since the unit is NOT full body waterproof.

Accessories information

Humidifier x1 Chinese and English manual x1
Data Cable x1 Cotton Stick x1

USB HUMIDIFIER



功能说明

喷雾口

盆栽盒

可根据自己的喜好,栽种喜欢的植物。

功能按键

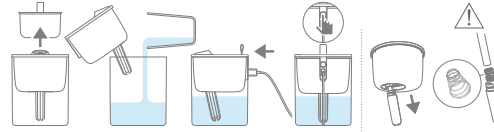
喷雾操作: 通电状态单击按键, 开启持续喷雾模式, 再次单击, 开启间歇喷雾模式。(喷4秒停2秒), 第三次单击按键关闭所有喷雾模式。(以此循环)

夜灯操作: 长按按键3秒, 开启夜灯; 再次长按按键3秒, 关闭夜灯。(以此循环)

防干烧: 所有喷雾模式设置4小时自动关机, 重启可继续使用。

USB电源口

使用说明与更换棉棒操作指引



取出小盆栽

打开顶盖往水箱装水

接入电源

按压按键开/关机开/关灯

拔出棉棒

更换时注意底部弹簧

保养维护

- 使用前请先检查电源适配器电压与本产品的兼容性, 请使用输出电压为5V的电源适配器, 并尽量使用标配的USB电源线。
- 初次使用, 或长期闲置后再次使用, 请先取出棉棒, 浸泡湿透, 再装回导管使用。需要定期更换棉棒, 定期清洁雾化片, 有利于延长产品寿命。
- 警告: 切勿使用热水来加湿, 也禁止在水中加入香水或精油, 可能导致产品损坏。主体部分不防水, 请勿浸泡清洗。注水和清洁时拔掉电源插头。

配件信息

加湿器 x1 中英说明书 x1
数据线 x1 棉棒 x1

USB HUMIDIFIER



签名: _____

时间: _____

备注: _____